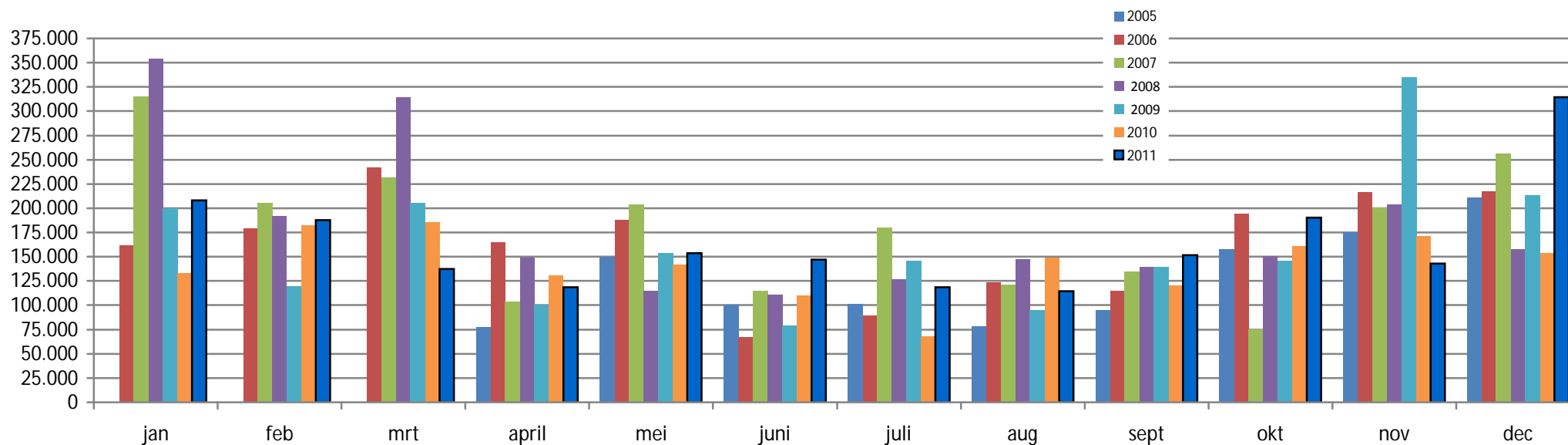
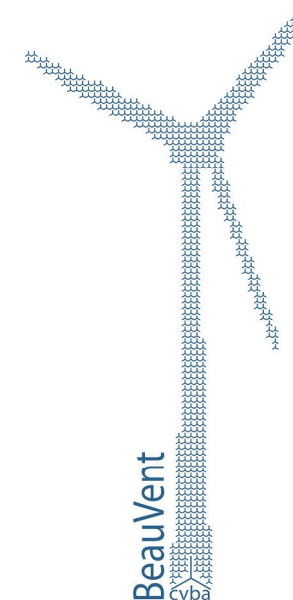


# Productiecijfers Botermolen (kWh)

	2005	2006	2007	2008	2009	2010	2011
jan	0	161.252	315.140	353.687	199.596	133.151	208.169
feb	0	178.919	205.680	191.586	119.826	182.414	187.742
mrt	0	241.858	231.466	314.202	205.769	185.643	137.225
april	77.593	164.635	103.491	148.348	100.154	130.593	118.729
mei	149.719	188.189	203.410	114.250	153.687	141.384	153.677
juni	100.051	67.276	114.716	111.005	79.379	110.130	147.065
juli	101.246	89.437	179.697	126.868	145.578	67.866	118.798
aug	77.960	123.322	120.877	147.781	95.022	148.533	114.689
sept	94.403	114.532	134.667	139.478	139.493	120.155	151.868
okt	157.725	194.040	75.460	150.790	146.017	160.981	190.394
nov	175.668	216.038	200.970	203.764	335.422	171.602	143.220
dec	211.050	217.423	255.783	157.703	213.735	153.647	314.547
<b>Totaal</b>	<b>1.145.415</b>	<b>1.956.921</b>	<b>2.141.357</b>	<b>2.159.462</b>	<b>1.933.678</b>	<b>1.706.099</b>	<b>1.986.123</b>



# Productiecijfers Lepelmolen (kWh)

	2005	2006	2007	2008	2009	2010	2011
jan	0	159.552	348.685	355.197	159.316	138.463	214.206
feb	0	196.044	201.979	191.472	124.773	182.405	187.120
mrt	0	240.132	232.753	312.448	210.813	202.973	144.789
april	101.452	158.848	103.973	146.275	98.550	156.315	120.115
mei	153.261	191.472	205.503	114.880	158.217	111.906	153.329
juni	91.857	66.511	114.314	108.063	80.688	104.252	149.188
juli	101.740	89.141	44.322	126.833	146.121	64.789	116.937
aug	94.409	126.474	118.203	155.834	95.296	153.822	114.644
sept	94.616	115.155	131.039	142.038	142.541	123.306	141.688
okt	162.210	197.332	78.872	169.643	134.129	165.584	187.431
nov	193.680	259.785	205.947	205.587	339.568	171.132	143.664
dec	191.389	254.174	257.750	151.446	216.724	160.484	325.250
<b>TOTAAL</b>	<b>1.184.614</b>	<b>2.054.620</b>	<b>2.043.340</b>	<b>2.179.716</b>	<b>1.906.736</b>	<b>1.735.431</b>	<b>1.998.361</b>

